

PART OF THE EAST 1/2 OF SECTION 10, T.5N., R.1W., S.L.B. & M.  
**QUAIL RIDGE ESTATES NO. 2 (PARTIAL AMENDED)**

213

IN OGDEN CITY

TAXING UNIT: 25

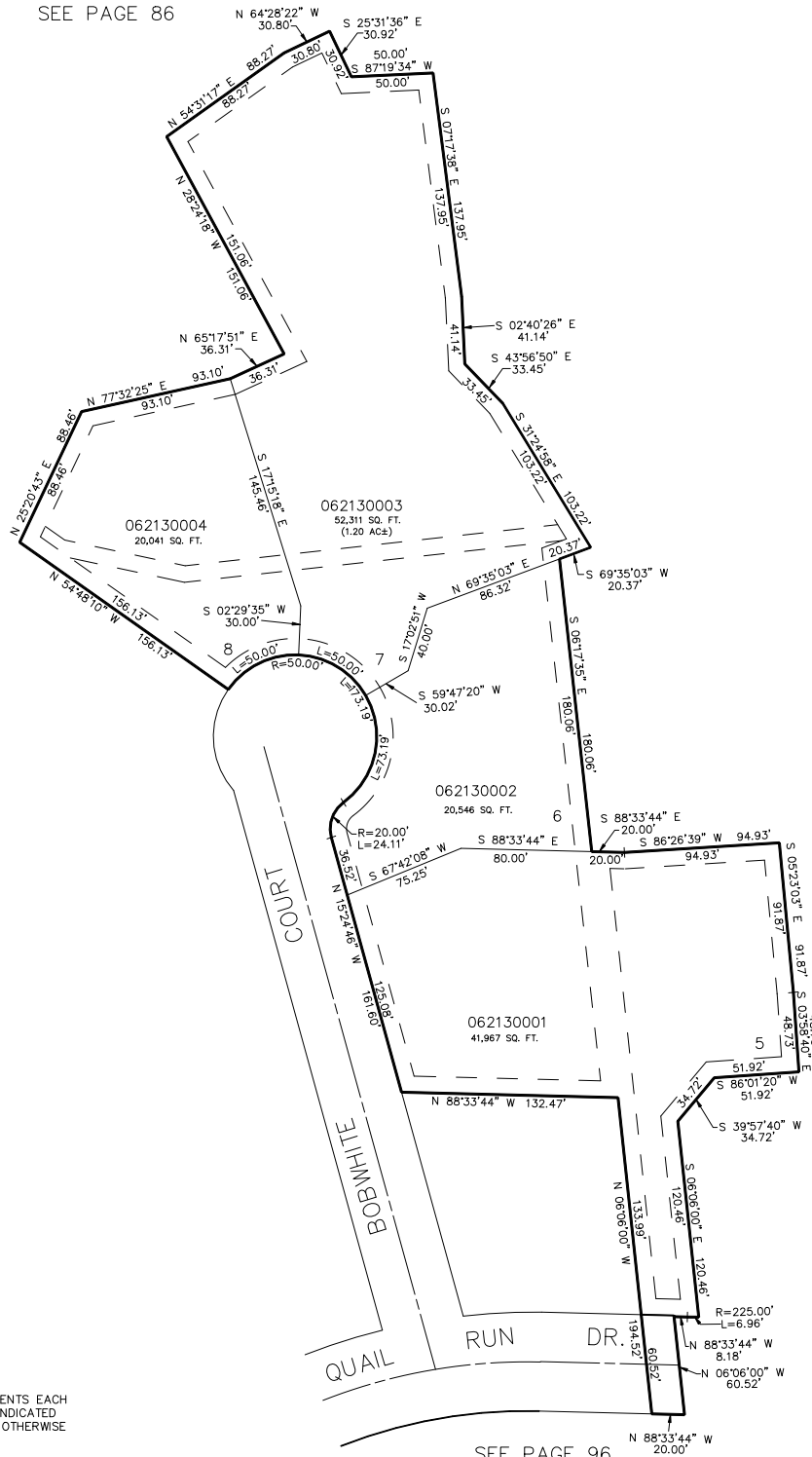
SCALE 1" = 60'

SEE PAGE 86

SEE PAGE 209

SEE PAGE 86

7' UTILITY & DRAINAGE EASEMENTS EACH  
 SIDE OF PROPERTY LINES AS INDICATED  
 BY DASHED LINES EXCEPT AS OTHERWISE  
 SHOWN.



SEE PAGE 96

FOR COMPLETE ENG DATA SEE  
 ORIGINAL DEDICATION PLAT IN  
 BOOK 35, PAGE 16 OF RECORDS.

FOR COMPLETE ENG DATA SEE  
 AMENDED DEDICATION PLAT IN  
 BOOK 44, PAGE 7 OF RECORDS.